

Entri Data Menggunakan Form (1)

Entri Data Menggunakan Form (1)

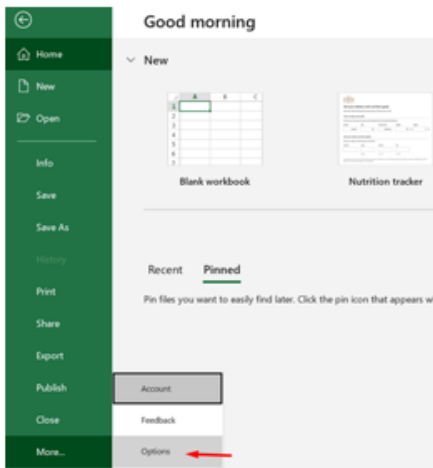


Microsoft Excel dapat digunakan untuk membuat form sederhana. Tampilan form dapat memudahkan proses entri data karena lebih user-friendly dan meminimalkan kesalahan input.

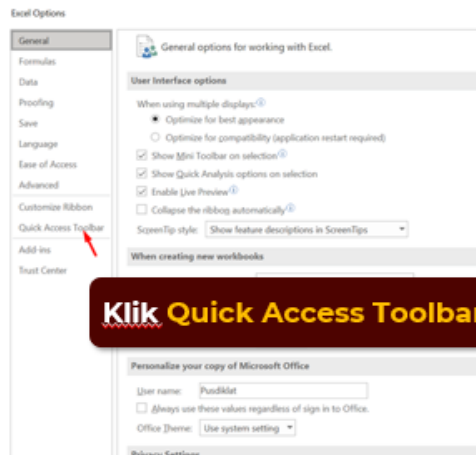
The screenshot shows a form titled "individu" with a search bar and a close button. The form contains several input fields with labels and values:

Label	Value
r101:	33
r102:	07
r103:	030
r104:	011
NoRT:	1
NoART:	1
b3k3:	1
b3k6:	1
b3k8:	44
b3k11:	2
b3k20:	3
b3k21:	1
b3k22:	09

On the right side of the form, there are buttons for "New", "Delete", "Restore", "Find Prev", "Find Next", "Criteria", and "Close". The "Find Prev" button is highlighted with a blue border.



Klik More... > Options



Revisi #2

Dibuat 4 Juni 2025 07:24:08 oleh Admin

Diperbaharui 4 Juni 2025 07:27:13 oleh Admin